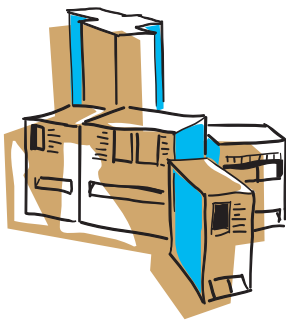


## Microsoft SQL Server Integration Services (SSIS)

Microsoft delivers Integration Services, a powerful and low-cost



ETL tool (Extract, Transform, Load) as a component of SQL Server. In an integrated development environment SSIS allows the visual configuration of data flows, including complex transformations. In line with this there is a debugging function, which leads to

## Team4 Notes Connector for Microsoft SQL Server Integration Services

stable data flows quickly. The runtime environment enables scheduling and logging. SSIS includes several standard connectors, e.g. for relational databases, text files, Excel and SAP.

### Lotus Notes Applications

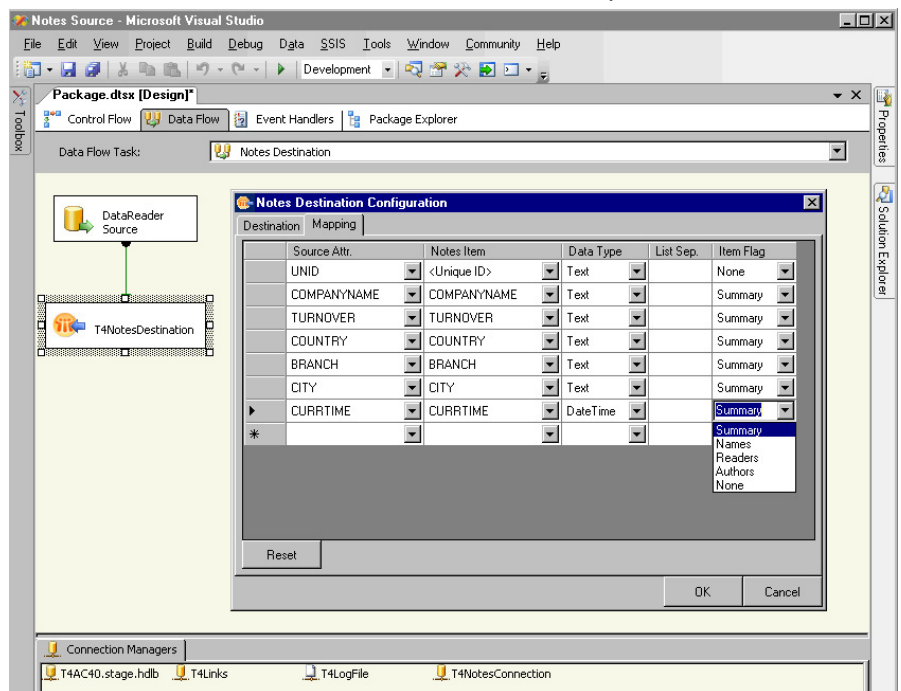
*Team4 Notes Connector for SSIS* makes it possible to include Lotus Notes databases in the data flows, while the connector can act as source (read) or destination (write).

*Team4 Connector for SSIS* takes into account the special properties of Notes databases:

- Transformation of Notes list fields into one or more datasets

- *Readers, Authors, Names* and *non-summary* items

notebooks requires that only modified data is written to Notes, *Team4 Snapshot Builder for*



SSIS is the right auxiliary application to realize this.

### System requirements

*Team4 Notes Connector for SSIS* has the following system requirements:

- Microsoft SQL Server 2005/08 (Standard Edition, or higher)
- IBM Domino Server, upwards of 6.5

Extended functionality requires

- Team4 CRM, upwards of version 3.5

### Contact

Team4 GmbH  
Kaiserstraße 100  
52134 Herzogenrath  
Phone: +49 (2407) 9582-0  
www.team4.com

An SSIS-conforming Notes Connection Manager can be used to design data flows once and then to transfer them easily to development, testing and productive environments.

### Application and use

SSIS is the solution of choice when data, such as customer masters, sales quantities/volumes or open items has to be synchronized with Notes on a scheduled basis (usually at night), or when data has to be transferred periodically from Notes to a relational database (Data Mart, Data Warehouse) for analysis. In doing so, SSIS enables full data consolidation and transformation. Where the replication of data with